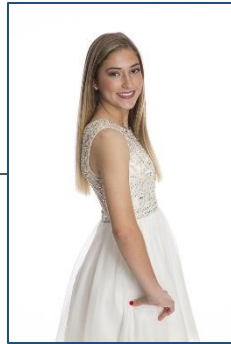
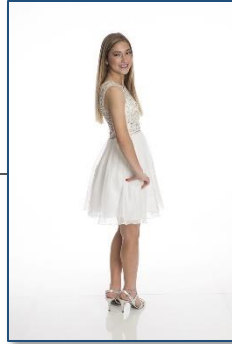


Select Your Photography Style.....

WHITE (HIGH KEY)

Groups can be photographed on either a **BLACK** background or a **GREY** Background.



Groups can be Photographed on
Either a GREY or a BLACK
Background

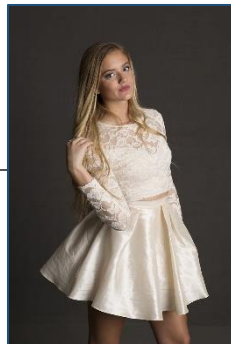
GREY (WITH GELS)

Multiple colors are available. Groups will be photographed on a **GREY** background utilizing colored gel of choice.



GREY (HIGH END)

No colored gels are used. Background photographs darker and the lighting is more dramatic. Groups will be photographed on a **GREY** background.



BLACK (LOW KEY)

High Contrast. Darker colored costumes also show up well because of side lighting. Groups will be photographed on a **black** background.

